

ehB
RESIDENTIAL

Your Property - Our Business



3, Bromhurst Way, Chase Meadow, Warwick

Price Guide £365,000



This modern, well-appointed three-bedroom end-of-mews house is situated in a preferred part of this popular residential area. The accommodation briefly comprises: entrance hall and cloakroom, spacious living room, breakfast kitchen, en-suite to the master bedroom, main bathroom, gas heating, double glazing, established front and rear gardens, garage and parking to the rear, with no upward chain. Energy rating C.

Location

Chase Meadow is ideally located close to Warwick

town centre. The area provides a variety of local amenities, including a doctor's surgery, community centre, pharmacy, convenience store, two takeaways, and a pub and restaurant. Schools for all age groups are also within walking distance.

Warwick town centre features a wide range of shopping and leisure facilities, as well as the famous Warwick Castle. Several state and private schools serve different needs, such as Warwick Preparatory, Boys' School, and The King's High School, all nearby. Commuting is straightforward, with regular

trains from Warwick Station, Warwick Parkway, and Leamington Spa to Birmingham and London Marylebone. The motorway network is easily accessible via junction 15 of the M40, offering links to Birmingham, the North, London, and the South.

Approach

Through a double-glazed entrance door into:

Reception Hall

Wood finish floor with coir mat, radiator, staircase rising to First Floor Landing, and wall-mounted thermostat control panel. Doors to:





Cloakroom

White suite comprising WC, pedestal wash hand basin, radiator, tiled floor, and double-glazed window.

Living Room

15'6" x 14'9" (4.74m x 4.50m)
Stone effect fireplace and surround with inset flicker flame remote control electric fire, matching wood effect flooring, two radiators, under-stairs storage cupboard. Double-glazed window to rear aspect and double-glazed French doors provide access to the rear garden.

Breakfast Kitchen

11'1" x 8'10" (3.38m x 2.70m)
Range of matching base and eye-level units, complementary worktops, and tiled splashbacks with inset single drainer sink unit. Built-in electric oven and ceramic hob, integrated Neff dishwasher, fridge/freezer, and washing machine. Matching wood-effect flooring, concealed gas-fired boiler, radiator, downlights, and a double-glazed window to the front aspect.

First Floor Landing

Access to roof space, built-in Airing Cupboard, double glazed window to side aspect. Doors to:



Bedroom One

11'1" x 9'1" (3.40m x 2.79m)
Built-in double door wardrobes, radiator, double-glazed window to the front aspect. Door to:

En-Suite Shower

Modern white suite including WC with an enclosed push-button cistern, vanity wash basin with waterfall tap, and white gloss fitted cupboards below. Chrome heated towel rail, fully tiled wall and floor, and a deep tiled shower enclosure with a chrome shower system.



Bedroom Two

10'3" x 8'2" (3.13m x 2.51m)

A radiator and a double-glazed window to the rear aspect.

Bedroom Three

7'3" x 7'1" (2.23m x 2.18m)

A radiator and a double-glazed window to the rear aspect.

Bathroom

White suite comprising bath with Mira shower system over, folding shower screen, pedestal wash hand

basin, WC. Radiator, wood-effect floor, extractor fan, double-glazed window to front aspect.

Outside

To the front, there is an established front garden, screened by mature edging with a pathway leading to the entrance door.

Private Rear Garden

External lighting, tap, paved patio area, lawned section, mature stocked borders and hedging with climbing plants, specimen shrubs and trees. Gated pedestrian access on the side.

Garage

17'4" x 8'2" (5.30m x 2.51m)

It is located at the rear, with an up-and-over door, power and light, and a service door to the garden. There is also parking in front of the garage.

Tenure

The property is understood to be freehold, although we have not inspected the relevant documentation to confirm this.

Services

All main services are understood to be connected.





NB We have not tested the heating, domestic hot water system, kitchen appliances, or other services, and whilst believing them to be in satisfactory working order and cannot give warranties in these respects. Interested parties are invited to make their own inquiries.

[Council Tax](#)

The property is in Council Tax Band "D" - Warwick District Council

[Postcode](#)

CV34 6NS



Your Property - Our Business

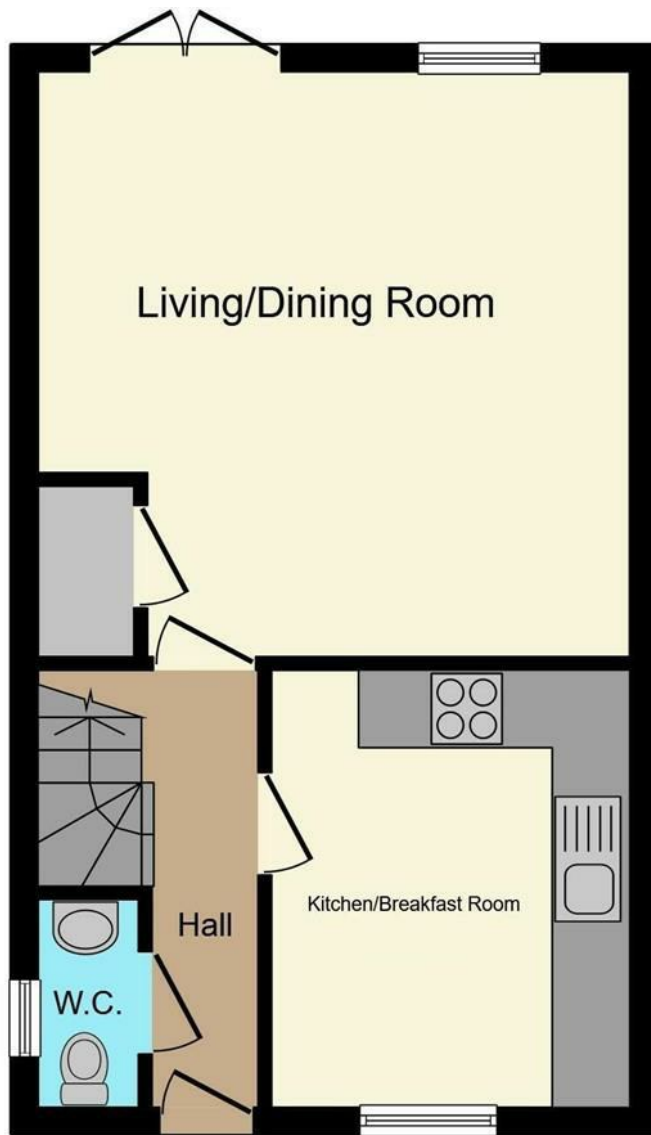
- Residential Estate Agents •
- Lettings and Property Managers •
- Land and New Homes Agents •

Warwick Office
17-19 Jury Street
Warwick
CV34 4EL

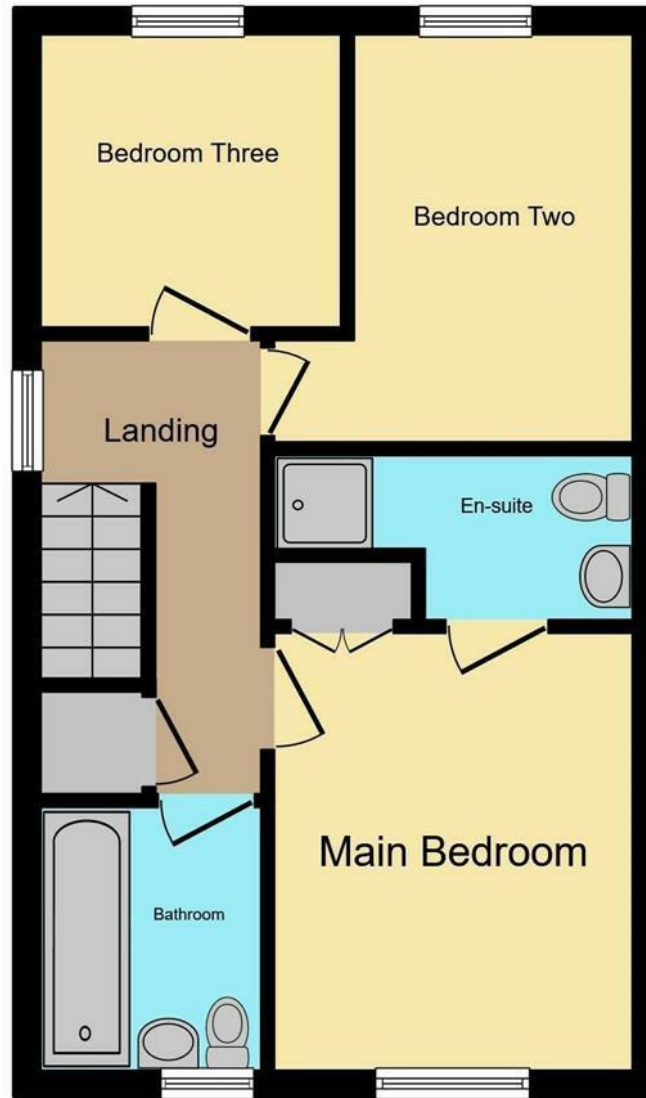
☎ 01926 499540 🌐 ehbresidential.com

Energy Efficiency Rating		Current	Potential
<i>Very energy efficient - lower running costs</i>			
(92 plus) A			89
(81-91) B			
(69-80) C		73	
(55-68) D			
(39-54) E			
(21-38) F			
(1-20) G			
<i>Not energy efficient - higher running costs</i>			
England & Wales			EU Directive 2002/91/EC

Also at: Leamington Spa, Somerset House,
Clarendon Place, Royal Leamington Spa CV32 5QN



Ground Floor



First Floor

Total floor area 73.1 sq.m. (787 sq.ft.) approx

This floor plan is for illustrative purposes only. It is not drawn to scale.

IMPORTANT NOTICE ehB Residential for themselves and for the Vendors of this property, whose agents they are, give notice that:- 1. The particulars are intended to give a fair and substantially correct overall description for the guidance of intending purchasers and do not constitute part of an offer or contract. Prospective purchasers and lessees ought to seek their own professional advice. 2. All descriptions, dimensions, areas, reference to condition and necessary permissions for use and occupation and other details are given in good faith, and are believed to be correct, but any intending purchasers should not rely on them as statements or representations of fact, but must satisfy themselves by inspection or otherwise as to the correctness of each of them. 3. No person in the employment of ehB Residential has any authority to make or give any representations or warranty whatever in relation to this property on behalf of ehB Residential, nor enter into any contract on behalf of the Vendor. 4. No responsibility can be accepted for any expenses incurred by intending purchasers in inspecting properties which have been sold, let or withdrawn. Measurement and other information. All measurements are approximate. While we endeavour to make our sales particulars accurate and reliable, if there is any point which is of particular importance to you, please contact this office and we will be pleased to check the information for you, particularly if contemplating travelling some distance to view the properties. 5. The agents will require identity documentation and evidence of address before entering into any transaction under money laundering regulations 2007.